



DECEMBER 2008



## Light on the Manger

The Sanctuary  
Choir Concert  
December 13th  
7:00 pm

Please plan ahead and invite your friends, family and co-workers to join us for a wonderful night where our attentions embrace the reason for the season! "Light on the Manger" will be an inspiring evening of song and scripture readings.

Free promotional tickets are available in the parlor for you to give to people as you invite them; it contains all the needed information so they will have a reminder of the date, time and location.

This will be a wonderful celebration in our community. Don't miss it!

A Message from pastor douglas.....the Season of Advent; a Season of Expectation!

December 7, 2008  
 Genesis 3:1-24  
 "The need for a Savior:  
 It's Sin"  
 Pastor Marianne Mundee

December 14, 2008  
 Jonah 1:17 to 3:2  
 "Running on Empty"  
 Dr. James P. Walker

December 21, 2008  
 Psalm 110:1-7  
 "Who's Talking"  
 Dr. James P. Walker

December 28, 2008  
 Micah 5:1-5  
 "O Little Town of  
 Bethlehem"  
 Dr. James P. Walker

Advent is an amazing time in the church year. It is the time when we move with anticipation through the 4 weeks leading up to Christmas. During this time of much shopping and decorating, and thoughtful preparations for sharing with our families and friends; we also wait and watch for the coming of our Savior. I like to think that everyone; neighbors, retail stores, television shows, *everyone* who joins in the spirit of the season is helping **me** celebrate the coming of the Child who would change the world, and who changes each one of our individual lives!



Tragically for many, the true meaning of the season has been lost. The season of expectation is now for selfish gain and material excess. We who know the Savior are therefore called to create a sacred space where the truth of the season can be honored and celebrated. It is during Advent where will still our hearts in spite of all the clamor of the season and say "We are watching for You." Just as the shepherds watched long ago. As the Wiseman journeyed to the place where the Christ child could be found, we too are journeying with expectation through our world to the place where He can still be found! We find that the Hope, Peace, Joy, and Love that He came to bring lives on as it lives within us, even as He lives within us.

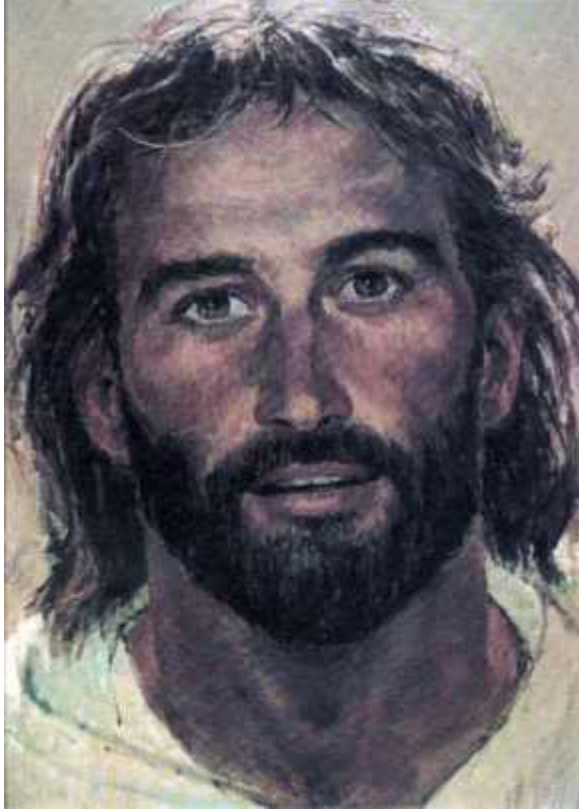
Our church community's journey through Advent will be a special one. The adorning of our sanctuary will not occur all at once. This first Sunday you will find the trees in place, but bare. Just as we stand bare before God, we will wait for what is to come; the blessings of the light, and all that is shiny and bright. Our children have participated in a special worship arts project photographed by Pat Moore and the children will be the bearers of the light this season. We will hear and participate in original readings written by the chair of our worship committee, Kaye Lee. Much thought and preparation has gone into supporting and enriching our congregation during this season of expectation.

I pray that you too will be filled with expectation for what the season means and what God wants to teach us. How amazing that we should begin our study of the Essential Jesus during this time. It is just another way we are turning our attentions to the reason for our excitement. May our souls sing out for Emmanuel; God with us.

Blessings to you all,  
 douglas

Quarterly Congregational Meeting Sunday December 14th  
 after morning worship in the activities center.  
 Please be in prayer for God's guidance in our church business.





## Essential Jesus Bible Study

November 24th we began the readings for this exciting church-wide study. The first sermon using the texts was delivered the first week of Advent, November 30th. 9:00 am Sunday Studies are being led by Lourdes Gutierrez and Jerry Reneau.

There are still pre-ordered study books to be picked up in the office. If you want to get a copy for yourself the book is titled

The Essential Jesus author:  
Whitney T. Kuniholm.

**Don't hesitate to join in the Essential Jesus Study, even if you haven't started already! In the Parlor are reading lists that have been dated so it's easy for everyone to join in the reading and a study and know exactly where we are!**

**" Pointing People to  
Jesus through...**

**REACHINGTEACHING  
CELEBRATINGSERVING**

### Prayer Ministry

Please remember our Committee groups for December's prayer focus:

- ♦ Choir
- ♦ Missions
- ♦ Friends
- ♦ Drama



The Prayer Committee has created a colorful bookmark for the month of December that includes a prayer for all of these committees and ministries. If you didn't receive a bookmark in morning worship, you can pick one up in the parlor.

**Following is the treasurer's report for the first ten months of 2008.**

For the period ended October 2008, we have been blessed to be able to keep our expenses below budget by more than \$XX,000. The church staff and volunteer leaders continue to show strong stewardship efforts. During the same nine month period, our income from tithes and offerings is below budget by more than \$XX,000. Should the current trend in giving continue, we could be looking at a budget shortfall of more than \$XX,000.

Throughout the end of the year, the finance committee is asking that each person prayerfully consider their giving. An *additional* \$3.00 per day would enable us to avoid having to move funds from our reserves to cover the forecasted shortfall. When you think about it, \$3.00 per day is not an overwhelming amount. If everyone could increase their giving by \$3.00, it would result in an additional \$3,150 per week (based on attendance of 150).

Our giving provides for our church's ministries and ultimately to our mission to "point people to Jesus through reaching, teaching, celebrating, and serving". In Malachi 3:10-12, God tells us to tithe so that there may be food in His house, in other words that His church would have the finances and ability to do what it needs to do to reach the lost and needy. In fact, when the economy is tough and peoples' finances are going south, we often see an increase in unchurched people reaching out to find Jesus and to get His help. If we stop or cut back on our giving, then we as a church may not be able to afford the resources to reach these people. If you have any questions about our current financial condition, our budget or how you can help our church continue to grow and minister to the needs of our community, please let me know. I'll be happy to visit with you, pray with you and encourage you to financially support the extraordinarily important needs of our church and its ministries.

Rick Marshall  
Church Treasurer

**December "Dates and Information"**

December 1	World Aids Day
December 3	Choir Council Meeting
December 3	Policies & Procedures
December 6	Outreach Planning
December 6	Facilities and Grounds Committee
December 7	Pasta with the Pastors
December 7	Education Committee Meeting
December 7	Personnel Committee Meeting
December 7	Prayer Committee Meeting
December 13	Worship Committee Meeting
December 15	Finance Committee Meeting
December 17	Church Council Meeting
December 18	Communications Committee Meeting
December 24-26	Church Offices closed
December 24	Christmas Eve Service 11:00pm

**Note: Meetings are subject to change.  
Please check with your committee chair if there is a question.  
For your convenience, the monthly church calendar can be found at [www.whiterockchurch.org](http://www.whiterockchurch.org)**

**FEELING DISCONNECTED?**

Be a part of the growing ministries of White Rock! People are needed in our Women's, Singles, Outreach, and Missions programs. Sign up is easy. Just click on the link: <http://www.whiterockchurch.org/nom.html>. Survey sheets are also available in the mail room. Complete one and turn it into the Nominations Committee In Box.

**Friends Annual Sock Drive is on!**

Now through the end of the year, we are collecting new socks for our clients. Please look for the large Jesus stocking in the parlor and place your donations there. It is a wonderful way to engage you friends, and coworkers in a group project either in response to World Aids day or the Christmas season! Give them a chance to do good by contributing a bundle of new socks!

# Renovation update

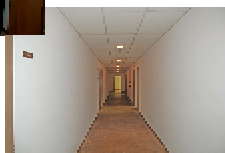
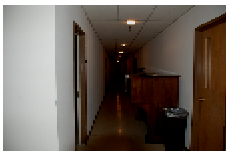
Proverbs 14:23 — “All hard work brings a profit, but mere talk leads only to poverty.”

Many people have been very busy with this work of renovating the Lord's House.

From the people on the Renovations Committee, who meet week after week, working through the excruciating minutia, to the Facilities and Grounds team who worked tirelessly to get the contractor to repaint the columns in the front, to the HVAC people who have installed a new system in the office, to the carpenters, sheet rock people and electricians who have been working to restore the basement to a useable condition, to the people who have donated furniture, to the volunteers who cleared the way for that furniture — people have been busy and we are seeing the results.

We know it's a long, slow laborious process, but think about when God will look down and say “Look what my people have done for me. It is good. And I am well pleased with the offering.”

Accomplishments	Next Steps
<ul style="list-style-type: none"> <li>3 Basement                             <ul style="list-style-type: none"> <li>3 Removed all moldy sheetrock in basement</li> <li>3 Replace hallway lights in basement</li> <li>3 Constructed new robe room for Choir</li> <li>3 Constructed new Choir storage</li> </ul> </li> <li>3 Replace lots of office furniture (with donated furniture)</li> <li>3 Met with Architect and Acoustical Engineer regarding sanctuary sound</li> <li>3 Met with Architect and regarding space plans, flow and accessibility issues</li> <li>3 Met with Architect to address other code and zoning issues</li> <li>3 Replaced Office heating / AC</li> <li>3 Received a gift of new furniture for the parlor</li> </ul>	<ul style="list-style-type: none"> <li>3 Paint columns</li> <li>3 Replace Activity Center AC</li> <li>3 Finalize flooring and paint for basement</li> <li>3 Complete basement renovation and move in</li> <li>3 Complete all color palettes, finish schedules and design concepts</li> <li>3 Estimate all work</li> <li>3 Prepare proposed phasing</li> <li>3 Finalization of Master Plan</li> <li>3 Discussions with Finance Committee and Communications about plan roll-out and potential capital campaign</li> <li>3 Review with Church Council</li> <li>3 Present to Congregation</li> </ul>



**Target is late December to early January to have the overall plan finished**

## Are You Going To Lose Money on Your Medical Flexible Spending Account ?

Did you have a good year medically and not spend all the money in your Payflex account? Would you like to use it all and get a tax deduction rather than lose it? There are those who have not had as good a year and they need your help. If you were to purchase items that are reimbursable and then donate those items to Friends you would end up with a tax deduction and a warm feeling in your heart. Walgreens marks items online with an FSA symbol so you can easily know what is reimbursable. They even offer free shipping on many items so you can have the delivery sent right to the church! CVS marks their items **FSA ELIGIBLE**. Both offer online or in store shopping for FSA.

### What over-the-counter items are eligible for my flexible spending dollars?

Over-the-counter products used to treat symptoms of injury and illness are eligible for flexible spending reimbursement, according to the IRS. Some examples of FSA items: cold and allergy remedies, first aid kits and pain remedies.

### Are my local store purchases eligible also?

Many are eligible, yes. When you purchase items most likely to be eligible for flexible spending reimbursement, they are marked with on your receipt.



Shop FSA at [Walgreens](#) or at [CVS](#) by clicking on the store name. **Save, Give and Shop!**

## Support from Kroger for White Rock Friends

Many of you have carried the bar code for Friends in your wallets and presented it at the time of checkout at Kroger for us to receive support from their Community Cares Program. Their new Neighbor to Neighbor program is even easier! If you will pick up the letter in the parlor with the heading "Customer Letter" (it has a bar code at the bottom) The next time you shop at Kroger just show them the letter when you present your Kroger card and they will scan both, permanently linking our bar code to your Kroger card, so each time you present your shopping card, it will automatically give credit to White Rock Friends toward Kroger's annual distribution.

Every little bit helps! We thank you for taking a minute to join in this opportunity.



	Dec. 2	Marla M					
	Dec. 2	Jan P					
	Dec. 5	Jack M					
	Dec. 7	John C					
	Dec. 8	Jimmy L					
	Dec. 11	Michael P					
	Dec. 13	Frank S					
	Dec. 13	Ron S					
	Dec. 18	Paul R					
	Dec. 21	Casey R					
	Dec. 24	Lourdes G					
	Dec. 25	Dan H					
	Dec. 26	Tilda Sue B					
	Dec. 27	Jamie R					
	Dec. 29	Theresa M					
	Dec. 30	Sharon B					



9353 Garland Road  
Dallas, Texas 75218

[www.whiterockchurch.org](http://www.whiterockchurch.org)

Church Office Hours  
10 AM to 4 PM  
Monday through Thursday

Main Phone  
214-320-0043

Fax  
214-320-0098

Worship and Study Schedule  
Sunday Bible Studies 9:00 AM  
Sunday Worship 10:45 AM  
Children's Worship 10:45 AM  
Wednesday Bible Studies  
10:00 AM  
7:30 PM

Friday Night Home Bible Study  
2nd & 4th Fridays at 7:00 PM

Sunday Night Live!  
All church Potluck and innovative  
Worship Program; 3rd Sundays at  
6:00 PM

Pasta with the Pastors  
1st Sundays after church  
Choir Rehearsal  
Wednesdays 7:30 PM

*For more details on any of the events listed  
please call the church office.*



White Rock Friends

214-324-1193  
General Store Open  
1st, 2nd, 3rd Tuesdays & Saturdays  
10 AM to 2 PM  
Lunch Served  
1st, 2nd, 3rd Saturdays  
10 AM to 2 PM  
Clothes Closet  
1st & 3rd Saturdays  
11:00 AM to 2:00 PM

---

Senior Pastor	Dr. James P. Walker
Associate Pastor WRF Administrator	Douglas Shaffer
Assistant Pastor	Marianne Mundee
Assistant Pastor	Vivian Davis
Pastor Emeritus	Dean Bishop
Administrator	Shawn Casaba
Executive Assistant	Linda Watson
Choir Director	Ken Dover
Pianist	Antoine Spencer
Organist	Charles Bridges
Sound Technician	Lori Martin
Webmaster	Laura Doscher